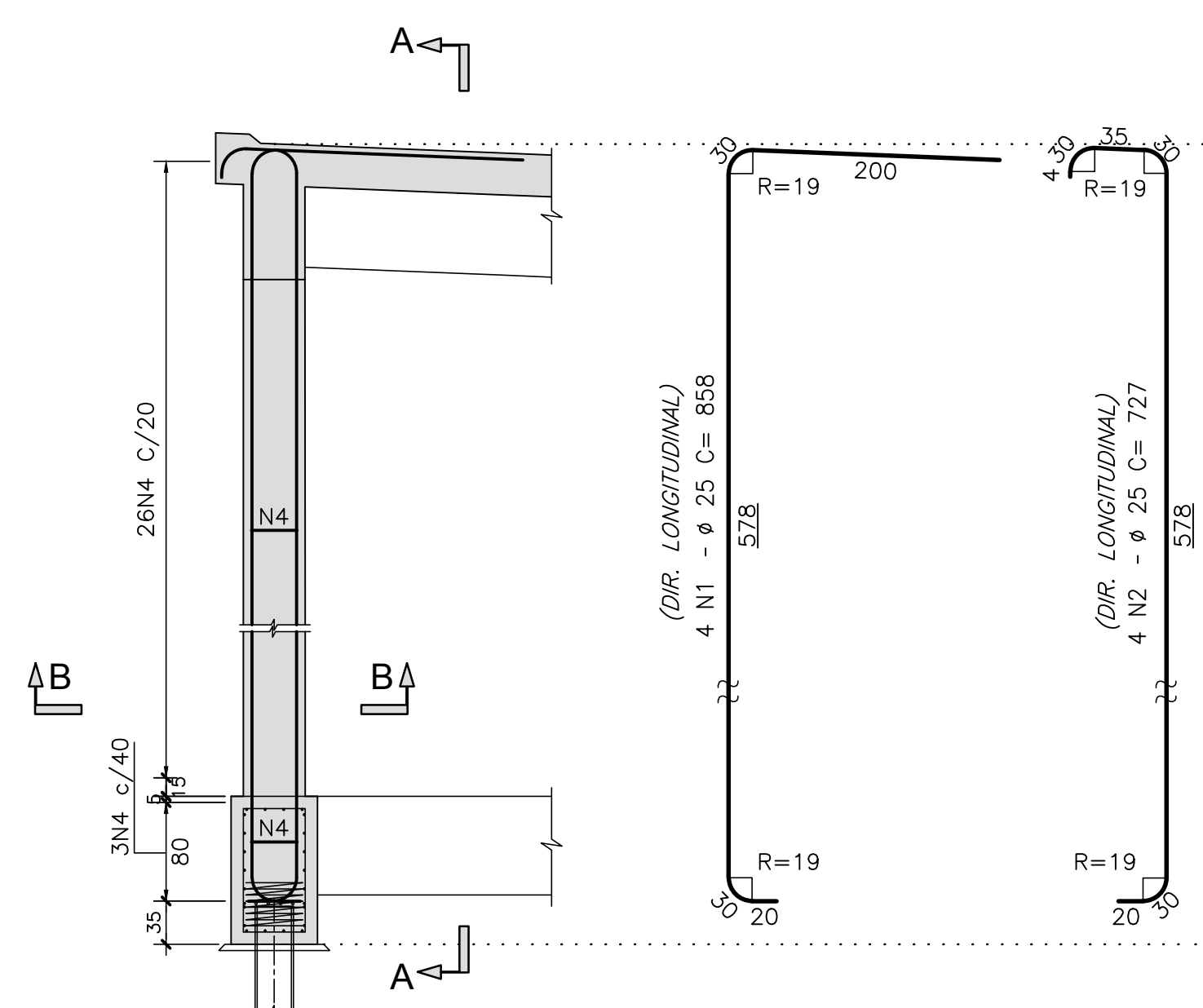
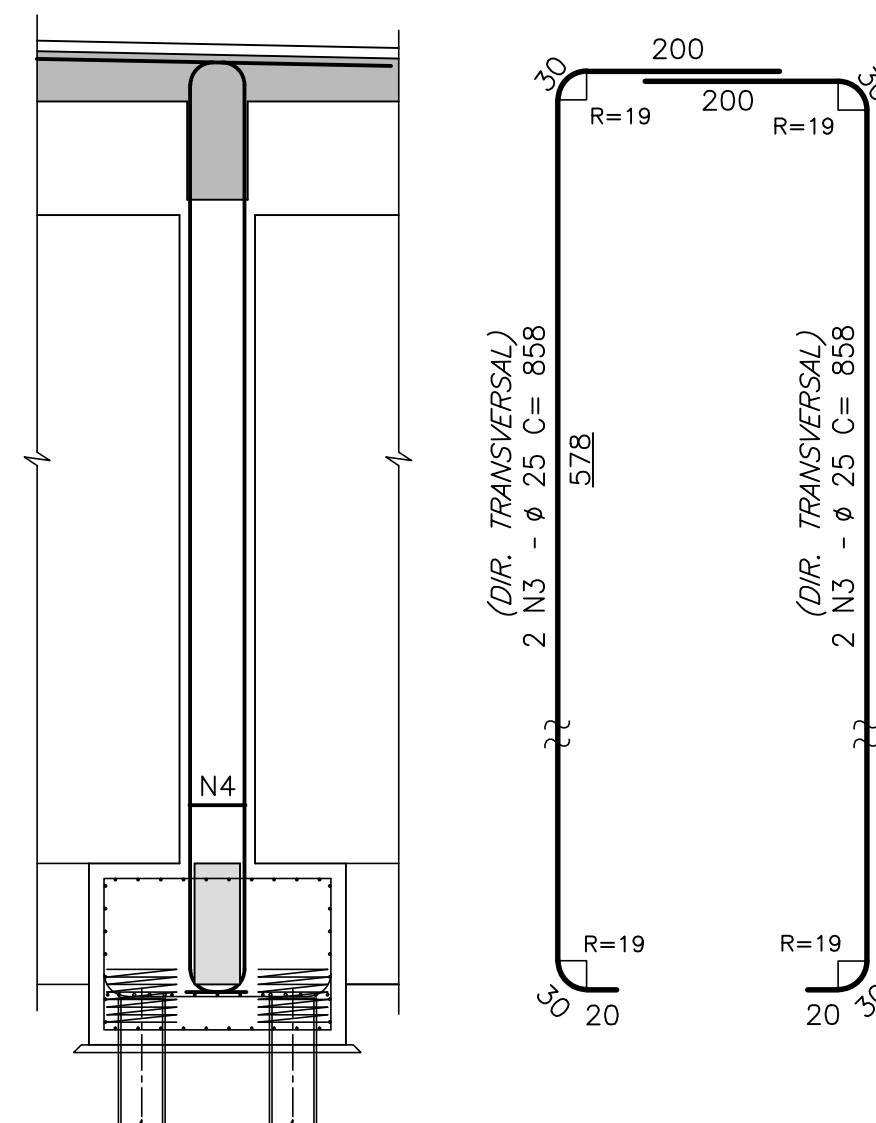


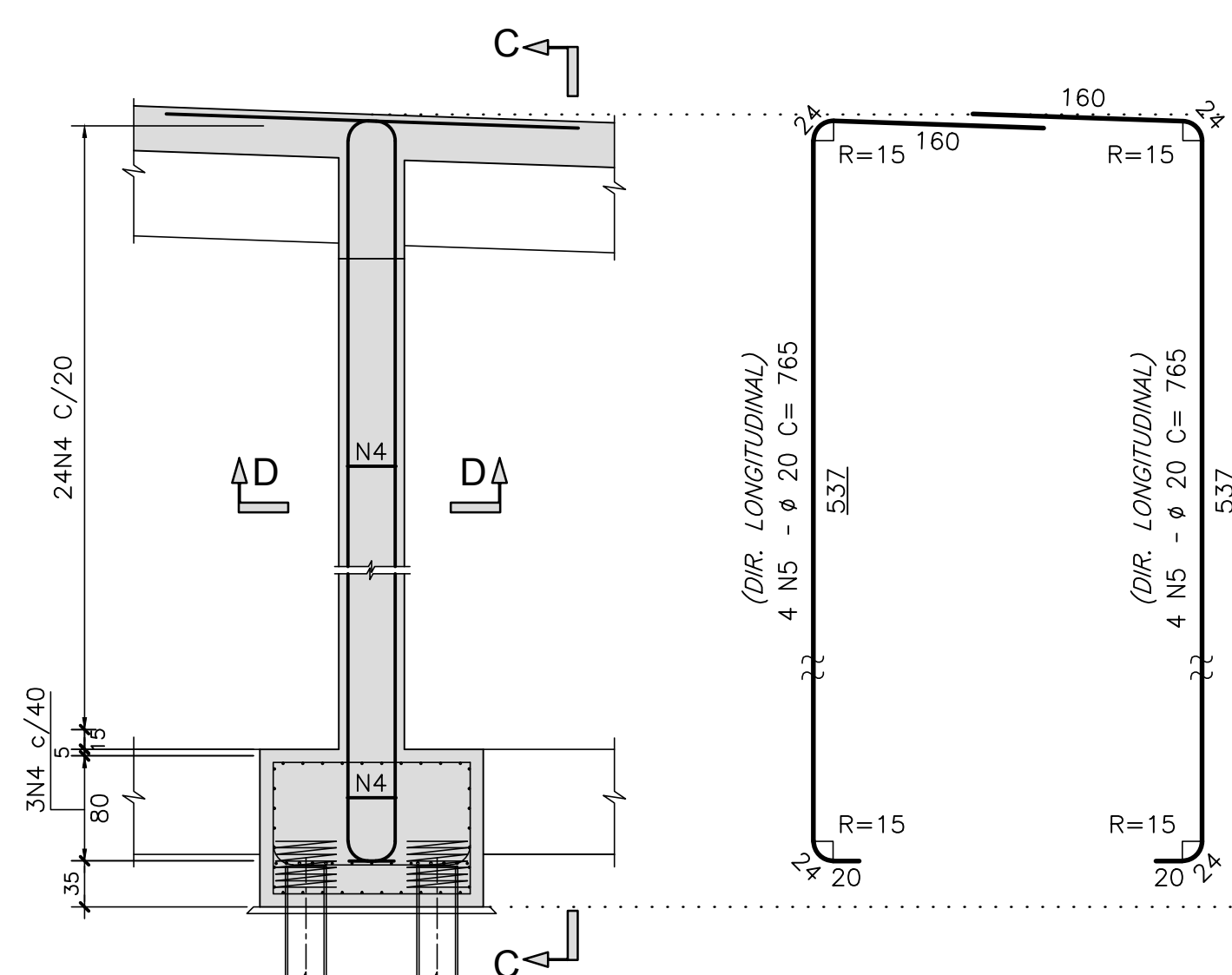
ESCALA=1:50



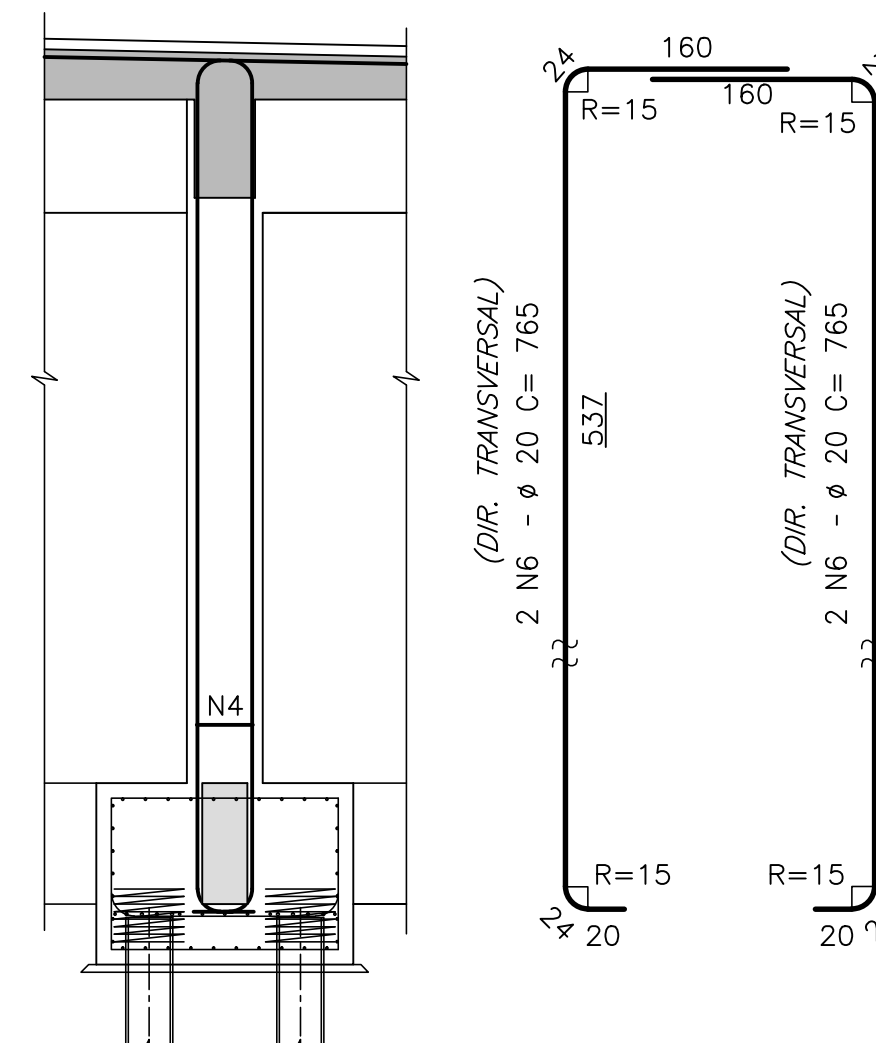
ESCALA=1:25



FSCAL A=1:50



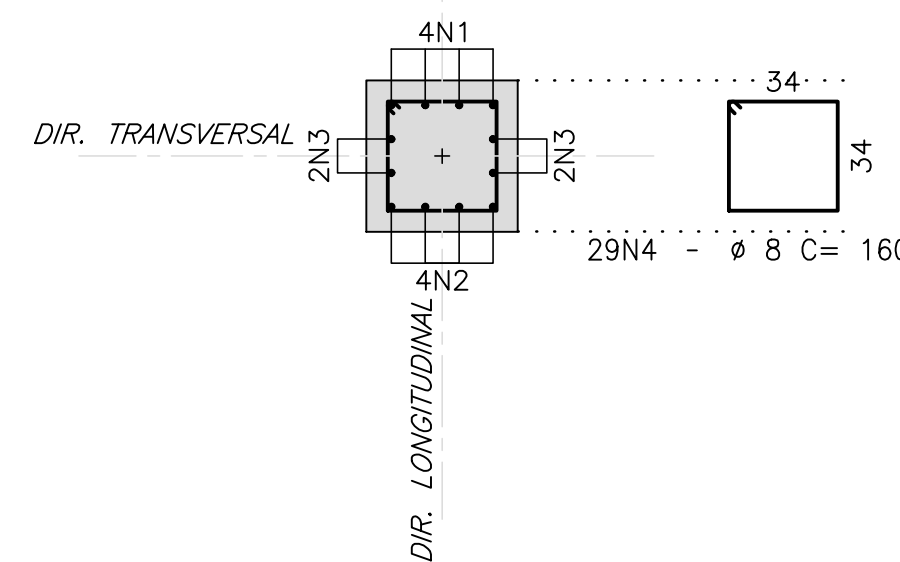
ESCALA=1:25



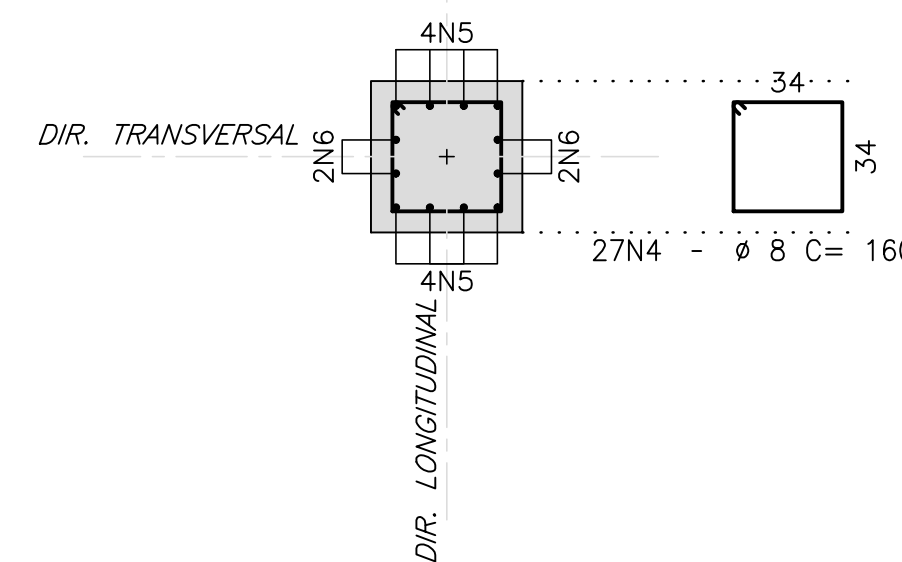
LISTA DE BARRAS				
N	Ø	Q	COMPRIMENTOS	
			UNIT.(cm)	TOTAL (m)
1	25	4	858	34.32
2	25	4	727	29.08
3	25	4	858	34.32
4	8	104	160	166.40
5	20	8	765	61.20
6	20	4	765	30.60
7	20	8	725	58.00
8	20	4	725	29.00
9	25	4	589	23.56
10	25	4	738	29.52
11	25	4	738	29.52

RESUMO AÇO CA-50		
Ø	COMPRIMENTO ( m )	PESO ( Kg )
8	166.40	67
20	178.80	447
25	180.32	721
TOTAL		1235

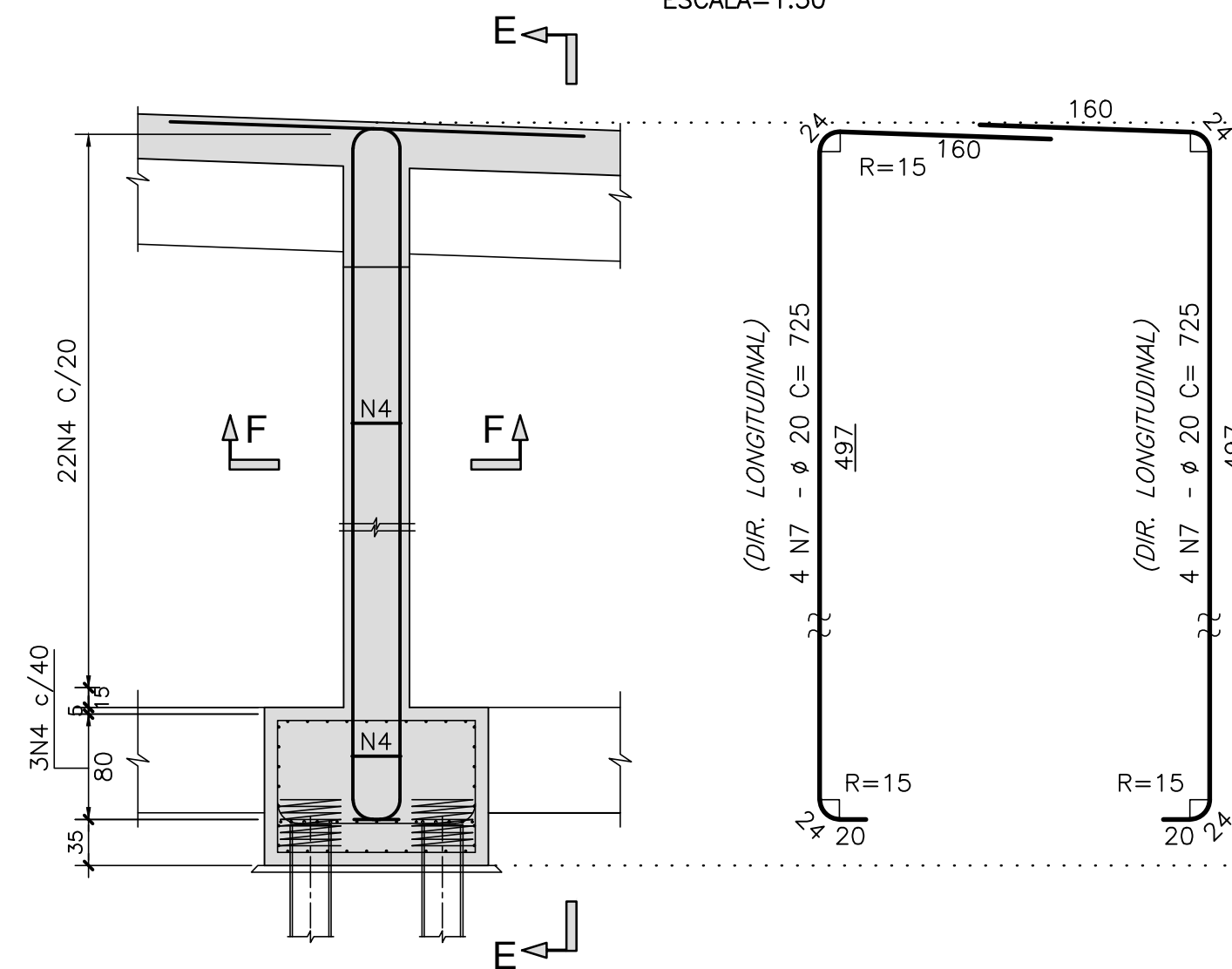
ESCAI A=1.25



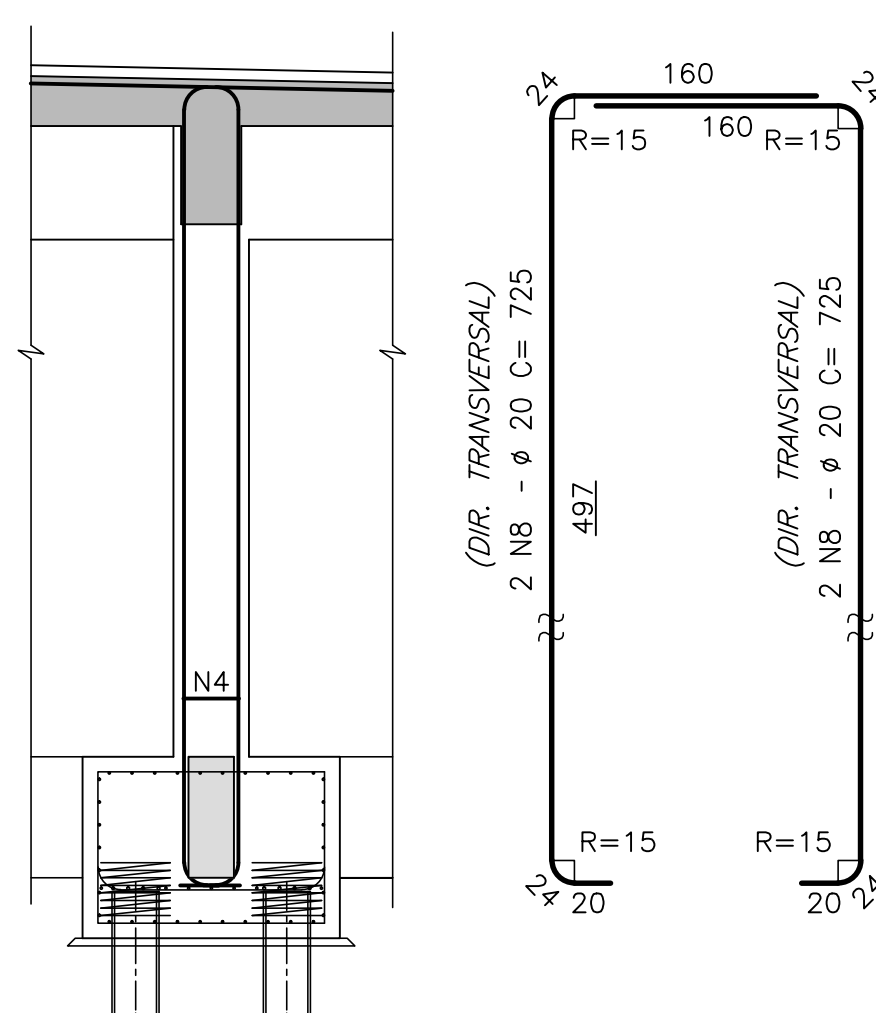
ESCALA=1:25



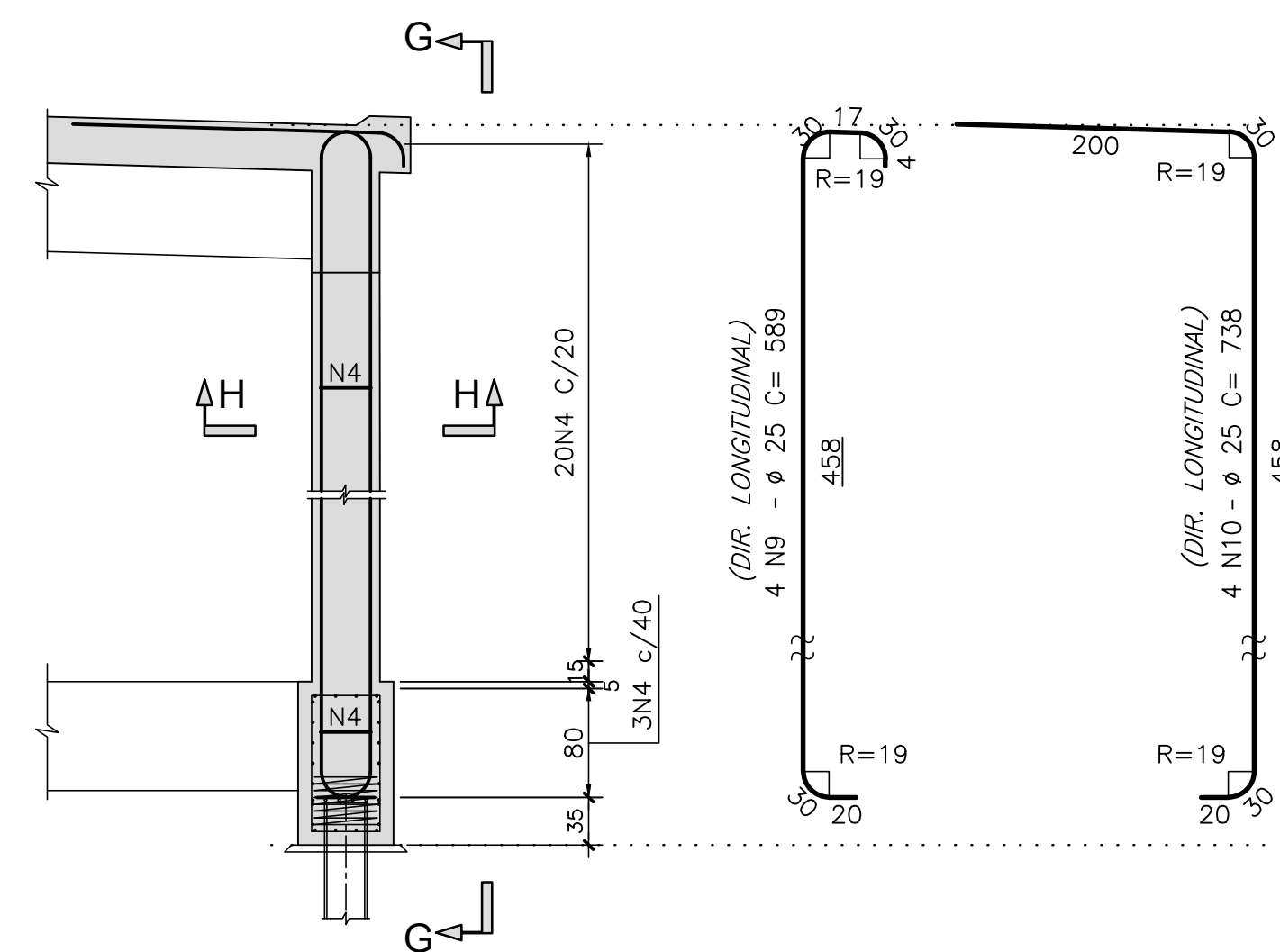
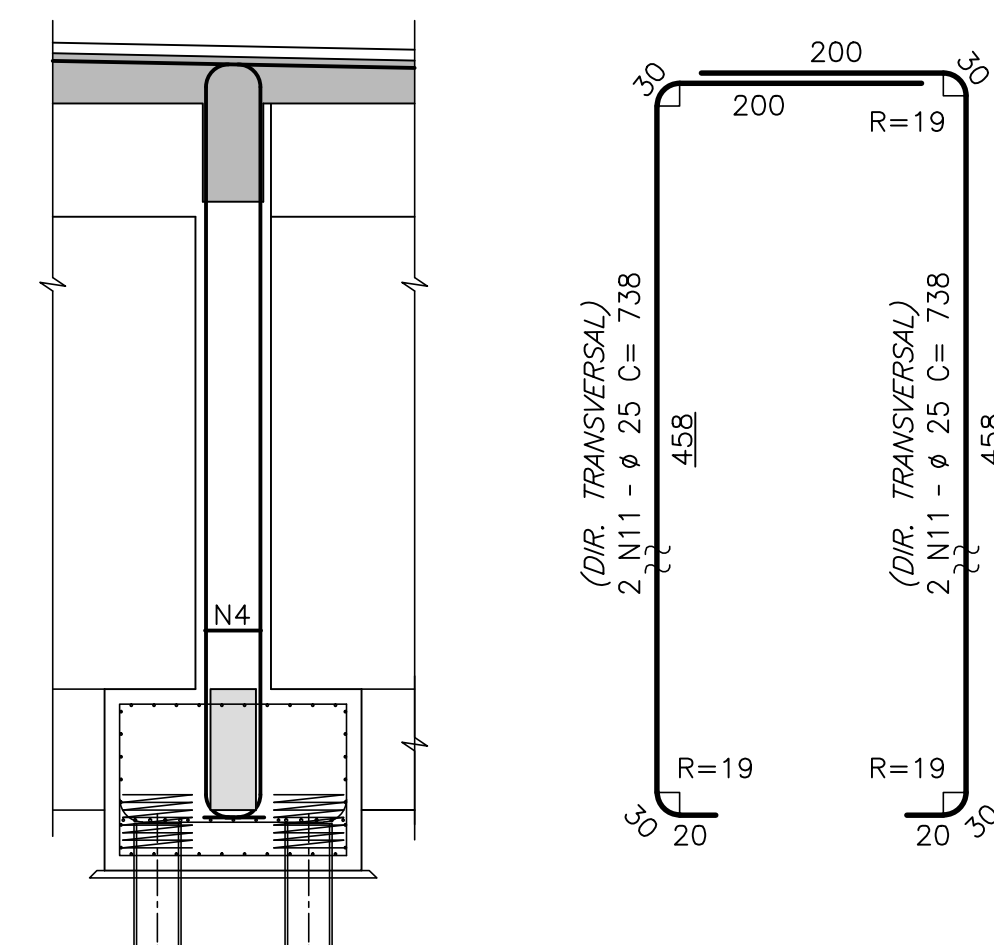
ESCALA=1:50



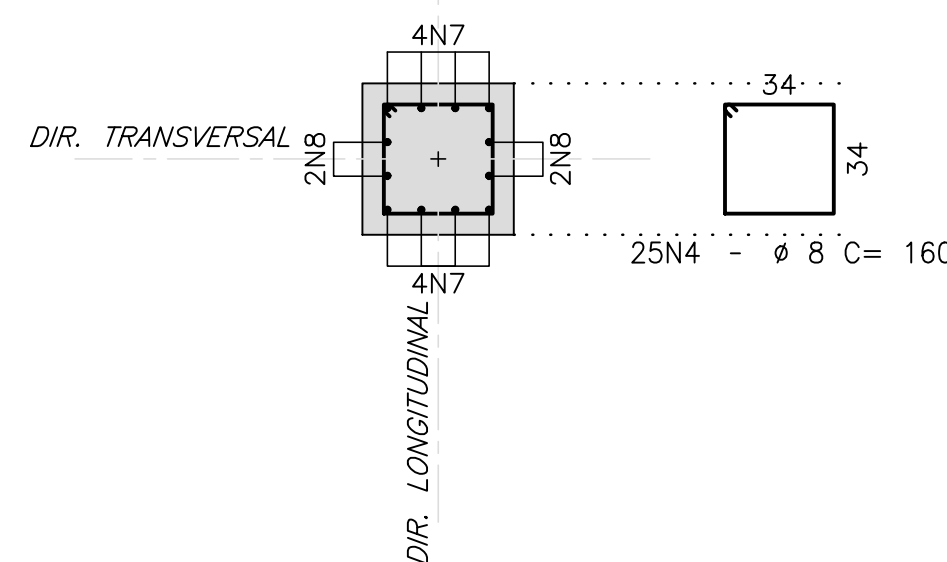
FSCAI A=1:2.5



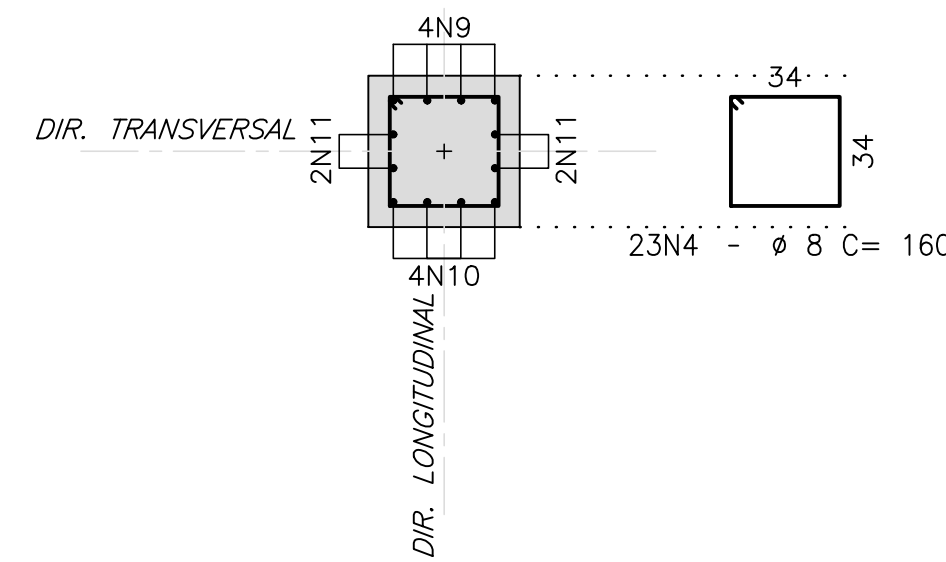
FSCAL A=1:50


$$FSCAL A=1.25$$


ESCALA=1:25



ESCALA=1:25



## DOCUMENTOS DE REFERÊNCIA


## NOTAS GERAIS

NOTAS :

- 1\_ DIMENSÕES EM CENTÍMETROS EXCETO ONDE INDICADO;
- 2\_ VER NOTAS GERAIS NO DESENHO N° 1-OAESV-X-RQ/16-70-Iv;
- 3\_ CONCRETO ESTRUTURAL:  $f_{ck}=40 \text{ MPa}$  - FATOR AGUA/CIMENTO  $\leq 0,45$ ;
- 4\_ COBRIMENTO DAS ARMADURAS:  $C=7,0\text{cm}$ ;
- 5\_ VOLUME DE CONCRETO E ÁREA DE FORMA INSERIDOS NOS DESENHOS DE FORMA 1-OAESV-X-RQ/16-341-Iv, 1-OAESV-X-RQ/16-342-Iv, 1-OAESV-X-RQ/16-343-Iv E 1-OAESV-X-RQ/16-344-Iv

## LEGENDAS

C	10/12/19	APROVADO	MAS	AEFA	BFR
B	04/12/19	PARA APROVAÇÃO	MAS	AEFA	BFR
A	31/10/19	PARA APROVAÇÃO	MAS	AEFA	BFR
O	05/08/19	MISSÃO INICIAL	MAS	AEFA	BFR
REV.	DATA	DESCRIÇÃO	EXEC.	VERIF.	APROV.

ÍNDICE DE REVISÕES				
	OPERAÇÃO:	OS/OSA:	NÚMERO PLANAVE:	EMIÇÃO:
	1.15.285	01/00	DE-F01-B23-1134	C
	CONTRATO:	ARQUIVO:		
	158/2016	DEF01B231134C1.dwg		

## SECRETARIA DE INFRAESTRUTURA URBANA

EMPREENDIMENTO:	OBRA DE ARTE ESPECIAL E READEQUAÇÃO DO SISTEMA VIÁRIO
TÍTULO:	PROJETO EXECUTIVO – OBRA DE ARTE ESPECIAL ARMADURA PILARES P5 A P8 – MÓDULO 1 – ENCONTRO 4 (RAMO 2000)

ESCALA:	NÚMERO CLIENTE:	REV.:
INDICADA	I-OAESV-X-R3/16-349-IV	3